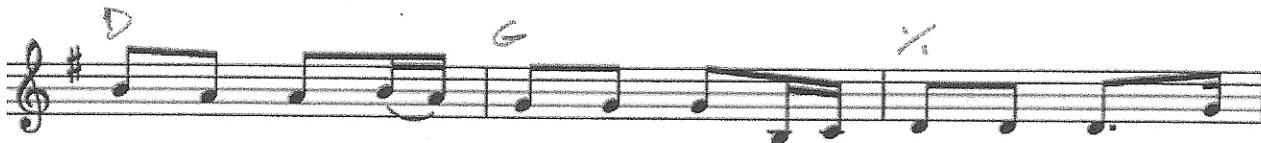


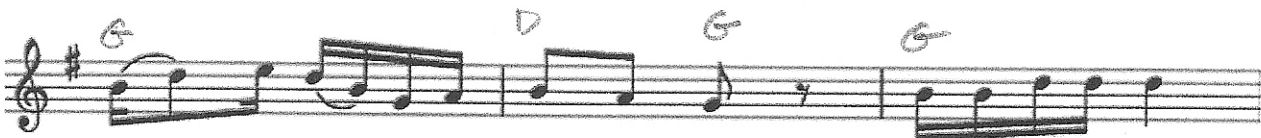
# TURKEY IN THE STRAW



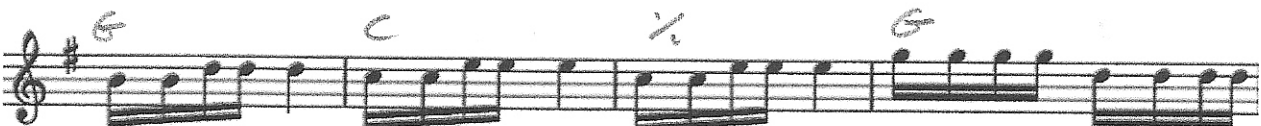
As I was a-gwine down the road, With a ti-red team an' a



hea-vy load, I crack my whip an' de lea-der sprung, I



says day-day to de wa-gon tongue. Tur-key in de straw,



tur-key in de hay, Tur-key in de straw, tur-key in de hay, Roll 'em uo an' twist 'em up a



high tuc-ka-haw, An' twist 'em up a tune called Tur-key in the Straw.